

---

# **Design Standards and Guidelines for New Construction or Rejuvenation of Seniors Care Facilities in Alberta**

# Background

---

## **Need for Provincial Standards and Guidelines**

- A number of former regions had developed their own standards and guidelines for seniors care facilities

## **Provincial priority to develop more seniors care facilities**

- Seniors are currently occupying a disproportionate number of spaces in acute care facilities

# Approach

---

## Methodology

- Establish a Design Standards Committee
- Gather standards and guidelines from other regions
- Gather standards and guidelines from other provinces
- Create new document based on panel member's expert judgment
- Consult with various stakeholders
- Refine and finalize document

# Approach

---

## Parameters

- Create clear “standards”; not minimums or maximums
- Create standards and guidelines with the flexibility to meet requirements of Long Term Care and Designated Assisted Living
- Utilize “best practices” from all sources
- Acknowledge that standards and guidelines are dynamic and may change as required

# Design Standards and Guidelines

---

## Design Standards and Guidelines Document

Each of the sections has the following format:

- Design Objective - purpose and design expectations to achieve the optimal outcomes
- Design Standards - mandatory requirements that must be incorporated into the design
- Design Guidelines - guidelines, highly important but not mandatory, should be incorporated for optimum performance

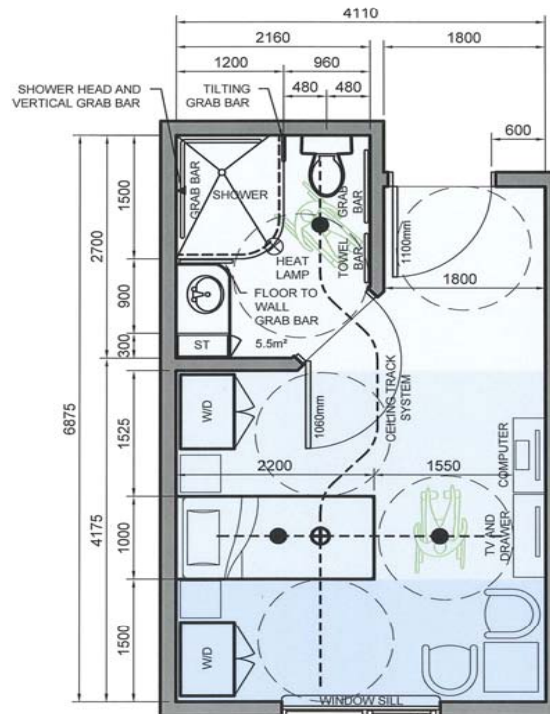
# Design Standards and Guidelines

---

## Compliance

- All design and construction/rejuvenation must comply with all current applicable building codes and regulations.
- Facilities funded by the Province of Alberta must also meet other specified standards (e.g., Alberta Infrastructure Technical Design Requirements for Health Care Facilities (the “Blue Book”), Leadership in Energy and Environment Design (LEED) green building rating system, Provincial Accessibility Standards, etc.).

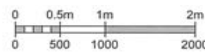
# Design Standards and Guidelines



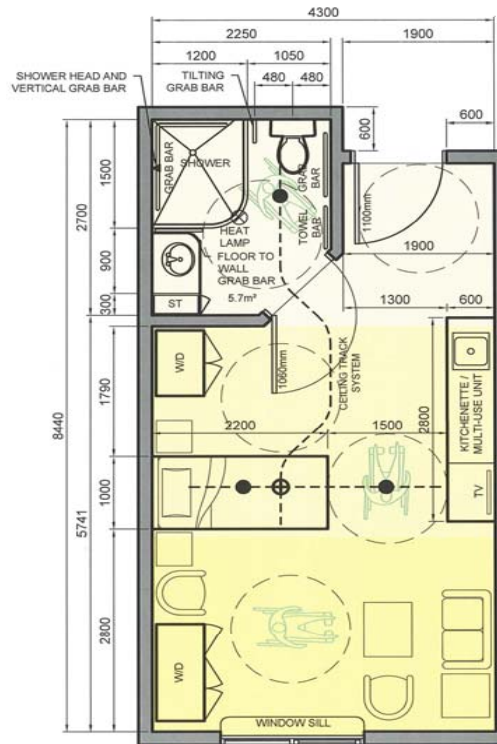
STANDARD LTC UNIT

OPTION 1

AREA = 27m<sup>2</sup>



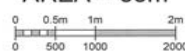
# Design Standards and Guidelines



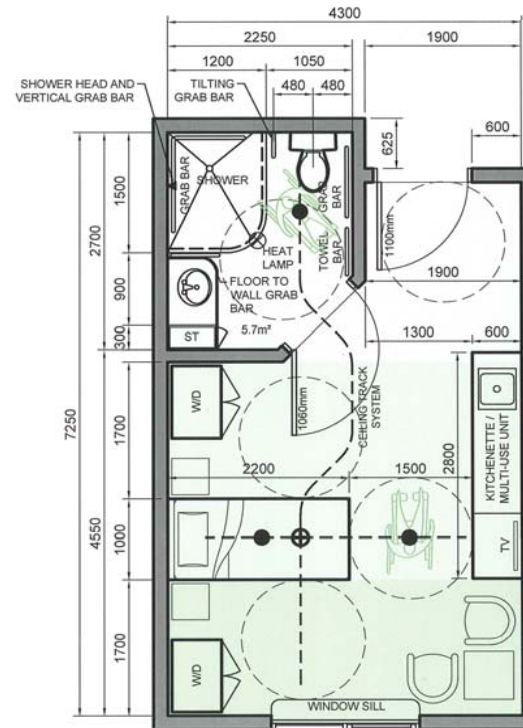
STANDARD DAL UNIT

OPTION 1

AREA = 35m<sup>2</sup>



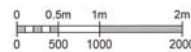
# Design Standards and Guidelines



STANDARD DAL / LTC UNIT

OPTION 1

AREA = 30m<sup>2</sup>



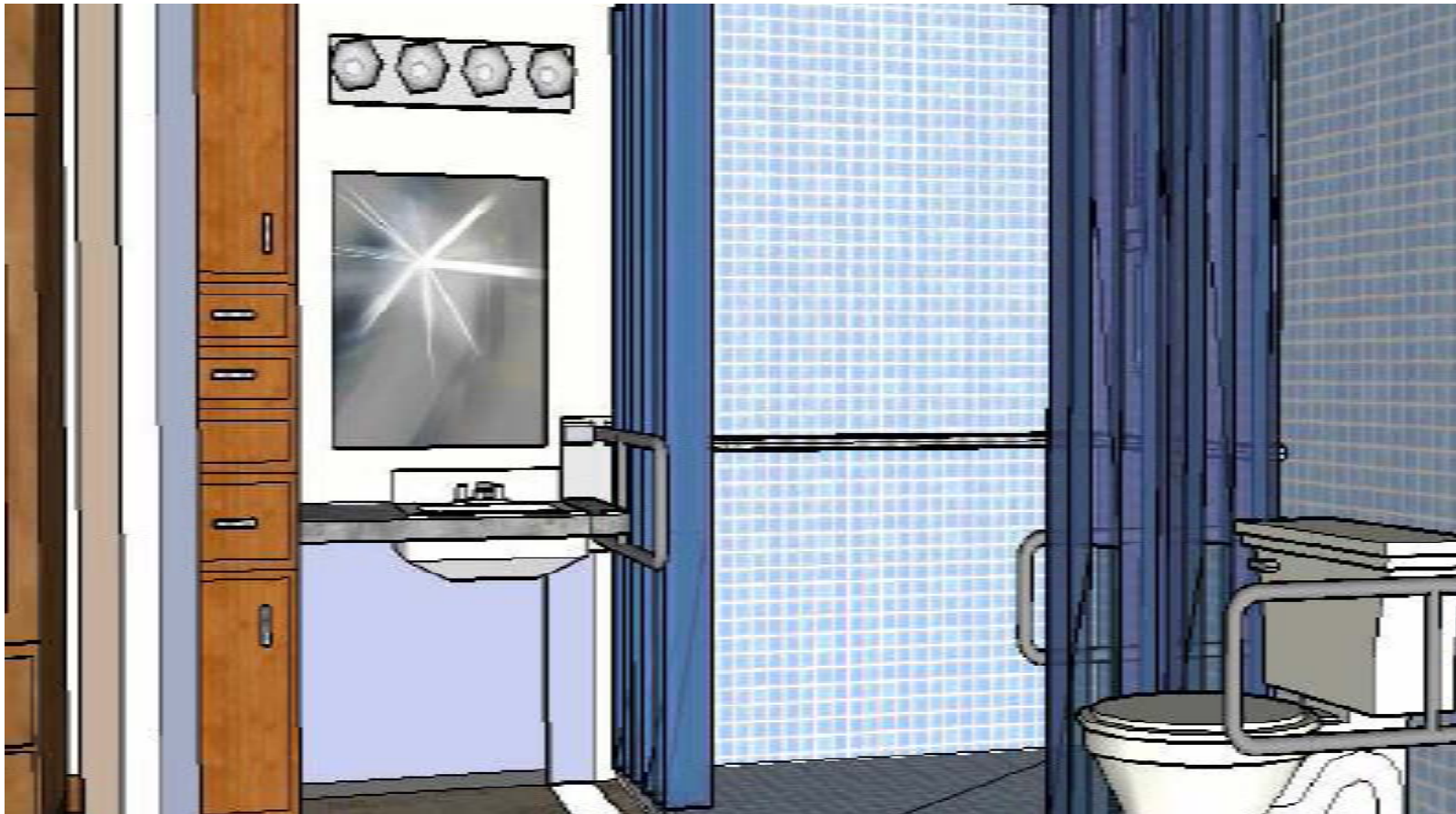
# Design Standards and Guidelines



# Design Standards and Guidelines



# Design Standards and Guidelines



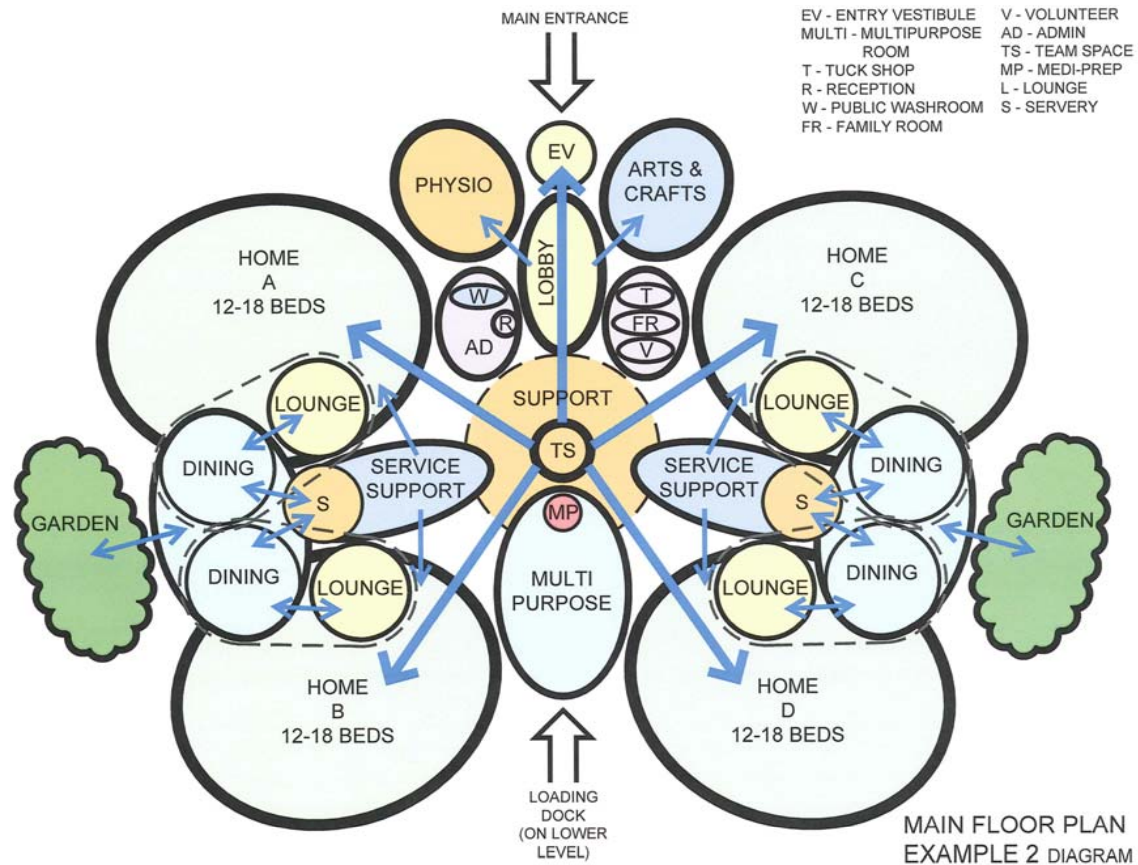
# Design Standards and Guidelines

---

**The Design Standards and Guidelines also include:**

- Dining Area and Servery Space
- Resident Lounge and Activity Space
- Resident Common Space and Public Space
- Facility and Staff Support Space
- Facility Dietary and Environmental Services Space
- Safety Features
- Bariatric Design Standards
- Dementia Care Design Standards

# Design Standards and Guidelines



# Design Standards and Guidelines

---

Questions?